

## Solution 6000

# The Integrated Access Control & Alarm System made for your business

The Solution 6000 Integrated Access Control & Alarm System offers an extensive feature listing including integrated proximity, numerous wire free options, high speed windows programming software and the simplest user - installer interface on the market today.



**BOSCH**  
Invented for life



## **Solution 6000** — Your business security solution

You have a responsibility to your staff and your business to protect them. Should a burglary or other incident occur, the loss is not just the items destroyed or stolen – it's the loss of comfort and security that your workplace once provided. The Solution 6000 from Bosch Security Systems provides you with an expandable solution that can be tailored to fit your business perfectly. This integrated access control and alarm system combines an impressive array of alarm functionality with the access control capabilities you've always needed. With future focused technology and the ability to adapt to your changing needs and work environment, Bosch have eliminated the complexities of finding the right security solution for your business. Look no further than the Solution 6000 to unlock the access and alarm solution that your business has been looking for.



### **Expandable to suit your business needs**

Every business is different, and the Solution 6000 can adapt to any requirements. It is capable of providing simple cost effective solutions for mid-sized businesses, yet is powerful enough to handle 144 zones (detection devices), and even up to 16 access doors when fully expanded for large applications.

The Solution 6000 has the ability to cater for up to 256 users, providing a perfect fit for most business users. With programmable authority levels, you determine which functions each staff member can perform: simple operations such as turning the system on and off, or accessing restricted areas. Customised security has never been so simple.

*If a user is enabled for door access, presenting a token or access card to an internal or external proximity reader will provide entry, which can be monitored and reported by the system.*



### Integrated Access Control

Access Control is no longer reserved only for larger more expensive systems. The Solution 6000 incorporates proximity technology from Bosch, providing an affordable and effective solution for integrated access control for up to 16 access doors or proximity readers - ideal for mid-sized commercial installations. Compatible proximity readers incorporate entry/exit and lock control built-in, which reduces cost and simplifies installation.

Bosch provides you with a choice of access control user interfaces including internal or weatherproof external proximity readers, keypads with built-in proximity readers, or for a higher security option, biometric fingerprint readers.



### Access Control Features

Comprehensive access control features including Holidays, Date / Time and Day of the Week Schedules allow you to easily manage your employee access and the arm/disarm functions of the security system. Up to 16 time zones can be set up, with each containing up to 4 time periods. Time zones can be used to automatically arm/disarm your security system at specific times, like automatically locking a reception door at 5pm, as well as controlling user access to doors such as the warehouse after 4pm, or to automatically control outputs, like gates that close automatically at 5.30pm.

### Multiple Arming Options

The versatility of the Solution 6000 is captured in its ability to provide the right arming option for any business. Up to 256 individual system users have the choice of arming and disarming using a unique PIN code (up to 8 digits long), a wireless remote, proximity card or token, biometric fingerprint or by using the Auto Arm function.

The flexibility of the Auto Arm Function enables you to program your system to automatically arm at pre-defined times. Programmed schedules can also extend to control the locking of gates or turning building lights on and off, providing a complete business solution.

*Proximity tokens and cards are programmed with the user's access rights and can be presented to any reader to arm/disarm or enter a door.*





**Simple** to use,  
with plenty of  
**flexibility**

### Simple Operation

The standard Bosch keypad features a graphical user interface that incorporates a text-driven menu system. Colour coded, illuminated keys make it easy to operate your security system, day or night. Red and green indicators provide easy identification of Armed and Disarmed modes, and the built-in sounder provides audible feedback when operating the system.

An enhanced version of the Graphic Keypad incorporates a built-in proximity reader, allowing users to simply present their token to the keypad to arm/disarm and/or unlock a door in one simple action.

Where required for external applications, like warehouse entry or main entrances, stainless steel weatherproof keypads are also available in slimline or standard fit, designed to complement any building facade.

### Easy Remote Arming

The Solution 6000 can be programmed to use a wireless remote that easily fits onto your keyring. These small remote controls allow you to arm and disarm your business premises by simply pressing one button.

The wireless remote can also be used to set the system in STAY mode, act as a portable panic button, and can even be used to switch lights and open factory gates & doors.

### Flexibility

Solution 6000 can be programmed to manage 144 zones that can be divided into 8 separately controlled areas. The 144 fully programmable intrusion zones can support sensors fitted to doors and windows, motion sensors and smoke detectors. When events are detected, the Solution 6000 can sound sirens, transmit events to your monitoring service provider and activate lights, providing security you can rely on 24 hours a day.

Your Solution 6000 can store up to 1000 events ie. arm/disarm functions and door access reports for each user, which can be viewed from the keypad by the master user. This way you can monitor the movements of your staff daily if required.

With 5 on-board outputs (expandable to 37), and one already preprogrammed for a roller shutter or garage door, your Solution 6000 can cater for all your building automation requirements, including lighting, air conditioning, irrigation - just about anything that is controlled via a switch and can be programmed.

*A wireless remote allows you to arm / disarm the building, and, if programmed, can be used as a panic button or building automation switch.*



# Reliable protection need not cost a fortune!

## Protecting Your Assets

The Solution 6000 provides the flexibility to divide your alarm system into a number of separately controllable areas including a common area (this can be a reception area, hallway, or underground carpark). It provides the flexibility for your staff to arm and disarm the areas that they have been given access to, without affecting other areas of your business. For your convenience the Solution 6000 can be configured to use a single key pad for all areas, or individual key pads for each area.

## Cost Effective Technology

State-of-the-art security technology has previously been unattainable for some due to prohibitive costs. Now, the Solution 6000 eliminates this obstacle, thanks to its unrivalled price / performance ratio. The benefits begin with the installation stage itself, which is straightforward, inexpensive and, if you wish, wireless. Complex security installations are now a thing of the past.

## High Speed, High Security

The security system communicates with other system modules via the built-in high speed connection (RS485 LAN), and for increased security, uses high level encryption. In this way, devices can be placed up to 1.2km from the control panel itself, making the system extremely flexible when dealing with large buildings or multiple buildings, like separate warehouses.



The GSM/GPRS and Ethernet options provide a high security backup communications path to phone line reporting, or can be used as the primary reporting path where VOIP or digital communications are used in the building.

## 24 Hour Protection

The Solution 6000's chime mode allows you to audibly monitor a zone or group of zones, such as business entry doors for customer entry during business hours or entry into storage areas while your system is disarmed. The chime mode feature is extremely useful for monitoring driveways and fire doors too. This fully automatic self testing unit allows you to forget the system is there, while knowing you are still protected.

## Versatility

The Solution 6000 offers you a wide choice of features and options, which coupled with the vast range of accessories available from Bosch Security Systems, ensures a system can be designed to suit your specific needs. Whether your office space is large or small, Bosch Security has a solution for you.



# Solution 6000 Product Matrix

Showing Products Scheduled For Release In 2014 - Firmware Release V2.15

Any one of the IP modules shown on the right can be installed. IP via WiFi is available when the WiFi keypad is used.

P/N - CM743B  
Plug On GSM/  
GPRS Module



F.01U.271.875

P/N - CM365B  
IP Communications Module  
2G GSM/GPRS/SMS/Ethernet



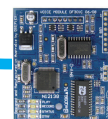
F.01U.287.310

P/N - CM751B  
Plug On Ethernet  
IP Module



F.01U.271.877

P/N - CM101B  
Interactive Voice  
Control Module



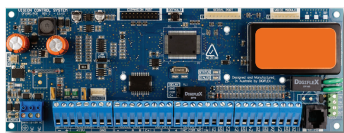
F.01U.271.505



P/N - SW500B  
Upload/Download  
Software (V2.11 or higher)  
F.01U.271.750



P/N - SW501B  
Site Manager  
Onsite Administration Software  
(IP Ethernet Connectivity Required)  
F.01U.294.862



P/N - CC610PB  
Solution 6000 Security  
Controller PCB  
F.01U.294.849

P/N - CM195  
Multi RF Receiver  
Interface  
F.01U.271.513



x1

Panel supports direct  
RX connection or via  
CM195.

1 x RF3212E Receiver-  
Directly Connected  
4.998.800.010



P/N - CM710B  
4 Way LAN Relay  
Output Expander  
Module



F.01U.271.516 x8

P/N - CM720B  
1AMP LAN Power  
Supply & Battery  
Charger Module



F.01U.271.517 x8

Up to 16 keypad devices of any type can be installed on the Solution 6000 panel. This includes Keypads, Readers and Wiegand to LAN Interfaces.

P/N - CP050B  
Night Arming  
Station



F.01U.271.536

P/N - CP151B  
Slim Style  
External Keypad



F.01U.271.870

Graphic Keypad  
P/N - CP700B White  
F.01U.275.889  
P/N - CP710B Black  
F.01U.275.891

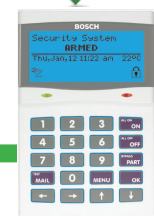


Fingerprint Reader  
P/N - CM729B White  
F.01U.275.882  
P/N - CM728B Black  
F.01U.275.883



P/N - CP150B  
External Keypad  
F.01U.271.869

WiFi



Graphic Keypad With WiFi  
P/N - CP740B White  
F.01U.294.858  
P/N - CP743B Black  
F.01U.294.860

## SMART CARD CREDENTIALS AND LAN READERS

P/N - PR365  
Adhesive Smart Card Sticker  
F.01U.294.869



P/N - PR301  
Smart Card Token with Keyring  
F.01U.294.867



P/N - PR350  
ISO Smart Card  
F.01U.294.868



Graphic Keypad with  
Internal Smart Card Reader  
P/N - CP722B White  
F.01U.294.854  
P/N - CP732B Black  
F.01U.294.856



External  
Smart Card Reader  
P/N - PR116B White  
F.01U.294.866  
P/N - PR115B Black  
F.01U.294.865



Internal  
Smart Card Reader  
P/N - PR114B White  
F.01U.294.864  
P/N - PR113B Black  
F.01U.294.863

## PROX CREDENTIALS AND LAN READERS

P/N - PR250  
ISO Prox Card  
F.01U.271.875



P/N - PR260  
Clam Shell Prox Card  
F.01U.271.693



P/N - PR200  
Prox Token  
F.01U.271.690



P/N - PR201  
Prox Token with  
Keyring  
F.01U.271.691



Graphic Keypad with  
Built-In Prox Reader  
P/N - CP701B White  
F.01U.275.890  
P/N - CP711B Black  
F.01U.275.892



External Prox Reader  
P/N - PR112B White  
F.01U.271.874  
P/N - PR111B Black  
F.01U.271.873



Internal Prox Reader  
P/N - PR110B White  
F.01U.271.872  
P/N - PR109B Black  
F.01U.271.871

P/N - CM797B  
LAN Isolator Module  
F.01U.275.885

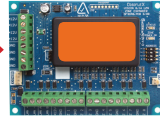
x8



Up to 8 LAN Isolator modules can be connected. Isolators provide electrical isolation between LAN segments reducing the chance of surge damage. Isolators can also be used to increase the total LAN length.

P/N - CM704B  
8/16 LAN Zone Expander  
F.01U.271.515

x8



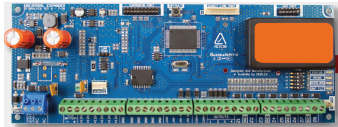
Up to 8 zone expanders of any type can be connected to the system. When using Single or Alarm & Tamper EOL, the CM707B can be installed to provide 16 zones on the CM705B Expander. The CM707B cannot be installed when using split EOL monitoring.

Max panel zone count configuration is:  
Single EOL = 136  
Alarm & Tamper = 136  
Split EOL = 144

- = Encrypted RS485 LAN
- = ISOLATED Encrypted RS485 LAN
- = Programmable Serial Input

P/N - CM707B  
8 Zone Piggy  
Back Expander  
F.01U.275.888

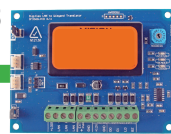
x8



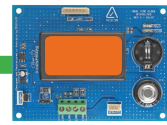
P/N - CM705PB  
8/16 Universal LAN Zone  
Expander PWA Only  
F.01U.275.880

P/N - CM796B  
Wiegand to DF RS485  
LAN Interface Module  
F.01U.287.314

x15



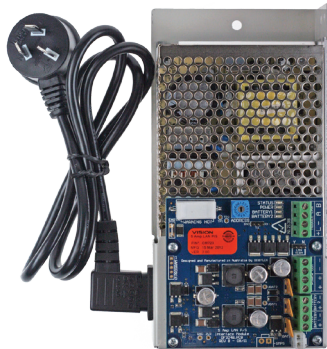
x1



P/N - CM760B  
Real Time Clock Module  
F.01U.275.884



Wiegand to LAN Interface  
can support 3rd party  
readers up to 40 bits.

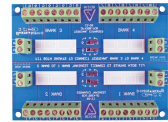


P/N - CM723B  
LAN 5 Amp P/S Module  
With Dual Battery Chargers  
F.01U.275.894

The CM723B can be easily  
installed inside the CM350,  
MW720B and MW730B  
enclosures.



P/N - CM900B  
Direct Link Interface  
F.01U.271.519



P/N - CM435B  
Power Terminal  
Expander Module  
F.01U.275.898



P/N - CM940B  
6 Way Programmable Relay Card  
Can be separated into single relay cards.  
F.01U.275.899



P/N - CM255B  
Panel Default Unlock Key  
Will reset Installer PIN and RAS  
PIN on Solution 6000 panels.  
F.01U.271.514



P/N - CM436B - F.01U.271.892  
Desktop Reader Interface For  
Wiegand Readers.  
No Reader supplied.

P/N - CM437B  
Desktop Reader Interface With Prox  
and MiFare Readers.  
DF Format Readers Supplied.

CM436B and CM437B are for use  
with Solutionlink and Site Manager  
Software packages and allow user  
credentials to be learnt at the PC.

Panels, modules and keypads with Orange product labels or serial number labels are running Digiflex's proprietary RS485 LAN system.

They are not compatible with older modules carrying white product labels with the exception of the CM195 which is not a LAN module.



## Contactless **Smart Card** technology

The Solution 6000 now includes advanced Smart Card technology. Smart Card systems are designed to provide a higher level of security and incorporate microprocessors capable of handling encryption functions on the card itself. While conventional RFID cards share their card data with any reading device (which increases the risk the card can be copied or replayed), Smart Cards will first communicate with a reading device to determine whether both card and reader are from the same system. If the system is not known to the card, it will not send any data – making the cards virtually uncopyable.

Smart Card credentials (cards, keyfobs, etc) also incorporate internal memory modules capable of holding additional data such as account information or personal details. In the future the Solution 6000 will include the ability to store and read data from the card. If you have specific applications for data storage on your Smart Cards, you should contact your local Bosch distributor for more information.



*Smart proximity tokens, cards  
keypads & readers.*



## **WiFi** technology in the **Keypads**



The new WiFi enabled keypads for the Solution 6000 provide additional options for panel communications. The new keypads sit on the wired RS485 panel LAN as with other keypads, but also act as a WiFi connection device and antenna for the panel, allowing it to join existing wireless networks in the area.

Just like with the wired network module for the Solution 6000, a WiFi enabled keypad allows the panel to use such features as IP reporting, upload/download via IP, and Site Manager software to control the panel. The flexibility of a keypad is that it can easily be installed close to wireless routers or access points, allowing the panel itself to be securely stored in a location that may not otherwise provide a strong wireless signal.

Even when using the WiFi enabled keypads, the panel itself can still be fitted with a standard communications module such as the CM743B GSM Module – giving the panel an additional communications path and enhancing the overall security of the system.



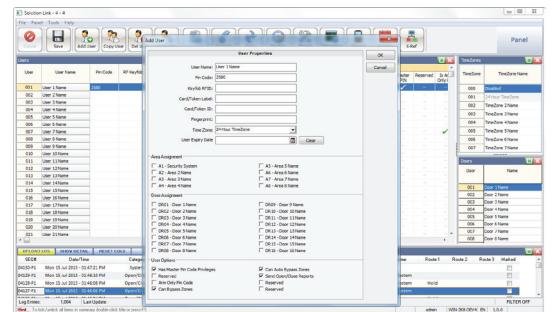
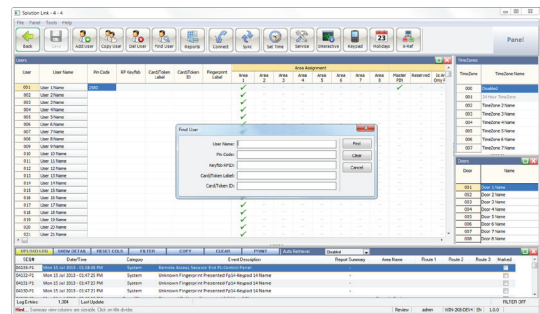
# Site Manager End User Software



Allows you to **remotely control** features of your alarm panel

## Makes End-User System Administration Easy

Site Manager is a new software platform for the Bosch Solution 6000 intrusion panels that gives end-users the ability to easily administrate the day-to-day operations of their system. The software allows a security manager to control multiple panels in different locations by way of conventional IP networks\*, giving them access to user lists, access control, timezones, and system and user activity logs.



With the software suite being topped off by a fully integrated reporting system, Site Manager places a new level of control, administration, and understanding in the hands of the end-user.

## Remote Control Of Panel Features & Functions

The Interactive mode of Site Manager allows the end-user to remotely control features of the panel such as outputs, doors, and includes a live log of access and other events. When used with the optional CM436B Desktop Prox Card/Token Reader, Site Manager allows the end-user to learn in access cards and token at the administration PC, without having to go out to a field device.



Use the CM436B Desktop Prox Card/Token Reader to learn in access cards & tokens remotely.

\* Site Manager requires a CM751B Plug On Ethernet IP Module for operation

## Main features of the system:

- ▶ Integrated access and alarm
- ▶ 16 access doors or LAN readers
- ▶ Up to 144 zones & 256 users
- ▶ Full text menu display for programming & user control
- ▶ Proximity, biometric and external readers, with external keypad options
- ▶ Supported communication formats include Conettix IP, GSM, SMS, Email, CID, GPRS, CSV  
IP, SIA 3+ Text, Voice and Domestic Dial
- ▶ SMS via Bosch GSM & SMS panel control ie. arm, disarm
- ▶ Up to 37 outputs available with one on-board dedicated relay programmed for roller doors

## Key Accessories

### Motion Detectors

Our range includes PIR, TriTech, Anti-masking as well as pet-friendly, PIR Curtain & outdoor motion detector options that incorporate industry-leading Bosch motion detector technology for superior catch performance and reduced false alarms.



**ISC-BPR2-W12**  
Blue Line Gen2 PIR  
12m



**ISC-BPR2-WP12**  
Blue Line Gen2  
Pet Friendly PIR 12m



**ISC-BPQ2-W12**  
Blue Line Gen 2  
Quad 12m



**ISC-BLD2-W12G**  
Blue Line Gen 2 TriTech  
12m



**ISC-BLD2-WP12G**  
Blue Line Gen 2  
Pet Friendly TriTech 12m



**ISC-PPR1-W16**  
Professional Series  
PIR 16 x 21m



**ISC-PDL1-W18G**  
Professional Series  
TriTech 18 x 25m



**ISC-PPR1-WA16G**  
Professional Series  
PIR Anti-Mask 16 x 21m



**ISC-PDL1-WA18G**  
Professional Series  
TriTech Anti-Mask  
18 x 25m



**ISC-PDL1-WC30G**  
Professional Series  
Curtain PIR 30 x 2.6m



**OD850-F1**  
Outdoor TriTech (10.525 GHz)  
15 x 15m

# Key Accessories

## Motion Detectors

Our range includes PIR, TriTech, Anti-masking as well as pet-friendly, PIR Curtain & outdoor motion detector options that incorporate industry-leading Bosch motion detector technology for superior catch performance and reduced false alarms.



**RFPR-12**  
RADION Wireless PIR



**RFPR-C12**  
RADION Wireless  
PIR Curtain



**RFDL-11**  
RADION Wireless  
PIR TriTech

## Keyfobs and Panic Buttons

Two-button and four-button keyfobs enable system arming and disarming with the option to program custom functions. Portable and fixed-position panic buttons feature one or two buttons to reduce false activation.



**RFKF-TB** 2 Button Keyfob  
**RFKF-FB** 4 Button Keyfob



**RFPB-SB** Single Button Panic Transmitter  
**RFPB-TB** 2 Button Panic Transmitter

## Wireless Universal Transmitters and Door/Window Contacts

Universal transmitters and Inertia Detectors monitor doors, window and other dry contacts. Door/Window contacts are available in surface mount and recessed models.



**RFUN** RADION Wireless  
Universal Transmitter



**RFDW-SM** RADION Wireless  
Surface Door/Window Reed



**RFDW-RM** RADION Wireless  
Recessed Door/Window Reed

## Specialty Transmitters

These transmitters can support special applications including smoke, glass break & request-to-exit detection.



**EIB186P**  
Brooks Smoke Detector



**RFGB** RADION Wireless  
Glassbreak Detector



**DWS100**  
Break Glass Switch DPDT  
Emergency Door Release



**DS1101i**  
Glassbreak Detector



**DS150i**  
Request-to-Exit Sensor



**DS160i**  
Request-to-Exit Sensor  
High Security



## **A Tradition of Quality and Innovation**

For over 125 years, the Bosch name has stood for quality and reliability. Bosch is the global supplier of choice for innovative technology, backed by the highest standards for service and support.



Bosch Security Systems proudly offers a wide range of security, safety, communications and sound solutions that are relied upon every day in applications around the world, from government facilities and public venues to businesses, schools and homes. When you need solutions you can rely on, choose Bosch.

### **Bosch Security Systems Pty Ltd**

For more information please visit  
[www.boschsecurity.com.au](http://www.boschsecurity.com.au)  
or email us at [stsales@au.bosch.com](mailto:stsales@au.bosch.com)

© Bosch Security Systems 2014  
Modifications Reserved  
Printed in Australia 08|14